

7

6

5

4

3

2

1

REVISIONS

REV	DESCRIPTION	DWN	DATE
C	EN2017070004	ALDD	2017-07-05
D	UPDATE DATE CODE	KELLY	2018-10-17

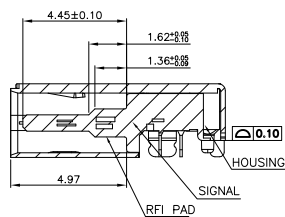
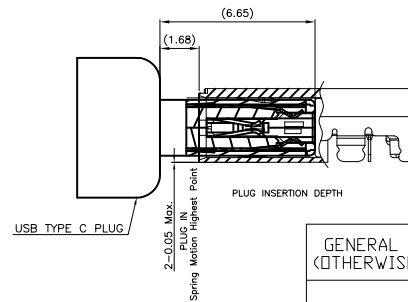
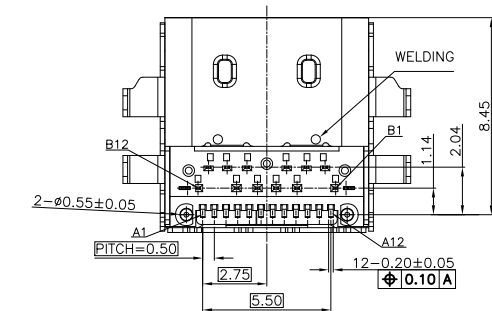
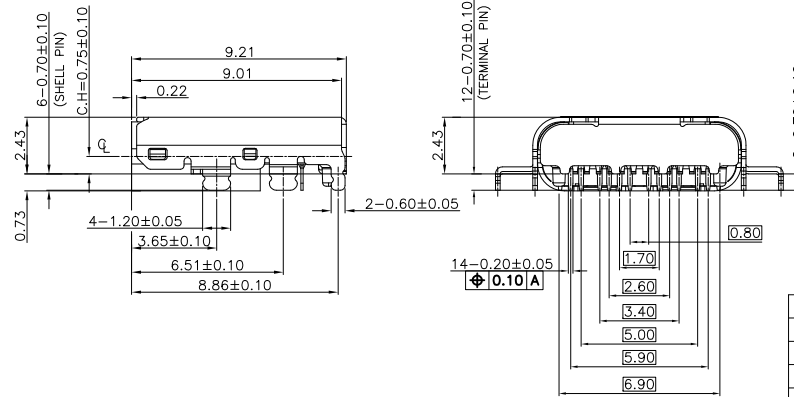
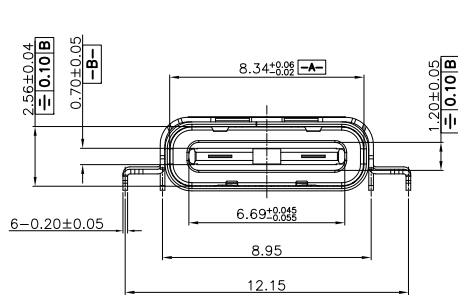
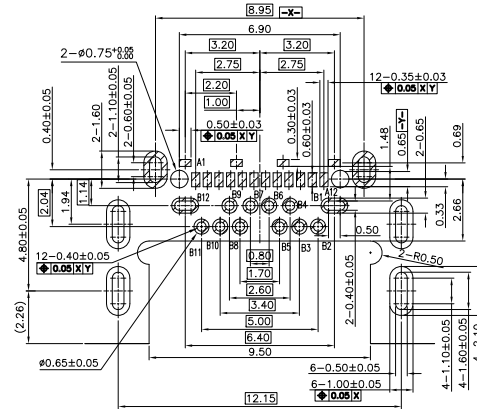
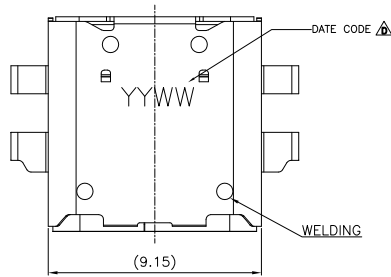
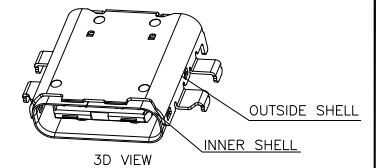
NOTES:

- MATERIAL:
 - OUTSIDE SHELL: SUS301R-1/2H T=0.20mm
 - INNER SHELL: SUS301R-1/2H T=0.20mm
 - SIGNAL: SUS301R-H T=0.10mm
 - RF PAD: SUS301R-H T=0.08mm
 - HOUSING: LCP+30%G.F. UL94UL-0 BLACK
 - TEMINARL: C19400 T=0.10mm
- PLATING:
 - TERMINAL: Au PLATING ON CONTACT AREA, MATTE SN 75u"(MIN) , 80u"(MIN) NICKE UNDER PLATING OVER ALL.
 - SHELL: MATTE Sn 75u"(MIN) ON SOLDERING AREA, 50u"(MIN) NICKEL UNDER PLATED OVER ALL.
- ELECTRICAL CHARACTERISTICS:
 - CURRENT RATING: 3.0 A
 - VOLTAGE RATING: 5.0 V
 - LLCR: VBUS& GND PINS: 40mΩ/PIN MAX
OTHER PINS : 40mΩ/PIN MAX
LLCR MAX. CHANGE OF ALL PINS: 10mΩ
 - INSULATION RESISTANCE: 100MΩ MIN.
- MECHANICAL CHARACTERISTICS:
 - INSERTION FORCE: 0.5~2.0kg.
 - WITHDRAWAL FORCE: 0.8~2.0kg.(INITIAL) 0.6~2.0kg.(AFTER LIFE TEST)
- LIFE TEST: 10000 CYCLES MIN
- P/N: USB-085-1S24HX

Au PLATING OF CONTACT AREA
G: GOLD FLASH
1: 5μ" Au
6: 30μ" Au

USB TYPE-C PIN ASSIGNMENTS:

A12	GND	B1	GND
A11	SSRXp2	B2	SSTXp2
A10	SSRXn2	B3	SSTXn2
A9	VBUS	B4	VBUS
A8	SBU1	B5	CC2
A7	Dn1	B6	Dp2
A6	Dp1	B7	Dn2
A5	CC1	B8	SBU2
A4	VBUS	B9	VBUS
A3	SSTXn1	B10	SSRXn1
A2	SSTXp1	B11	SSRXp1
A1	GND	B12	GND
PIN	SIGNAL NAME	PIN	SIGNAL NAME



GENERAL TOLERANCES (OTHERWISE SPECIFIED)		SCALE	DESIGN UNITS	TITLE			
4 PLS	±	NONE	MILIMETER		USB TYPE C CH=0.75mm H=2.43mm		
3 PLS	± 0.10						
2 PLS	± 0.20			PART NO. USB-085 SERIES			
1 PLS	± 0.30						
ANGLES	± °			DRAWING NO. SD-USB085-001			
QUALITY SYMBOLS	∇=0						
THIS DRAWING CONTAINS INFORMATION THAT IS PROPRIETARY TO VITECK CORP, LTD AND SHOULD NOT BE USED WITHOUT WRITTEN PERMISSION				THIRD ANGLE PROJECTION	DWG REV. D	SHEET NO. 1 OF 1	SIZE

7

6

5

4

3

2

1

7

6

5

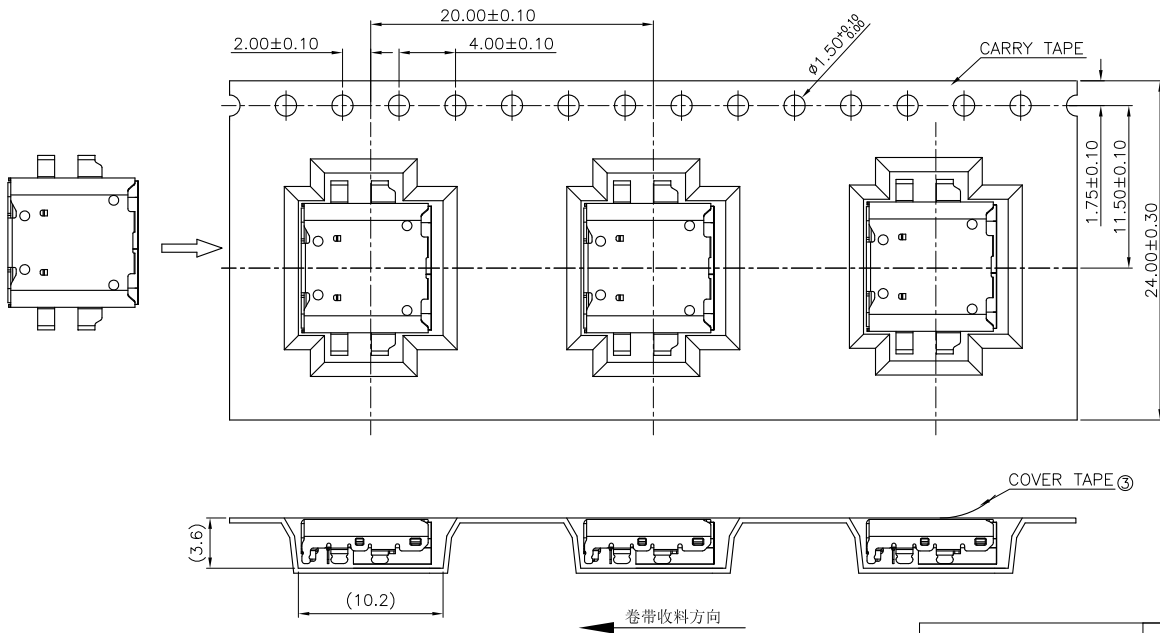
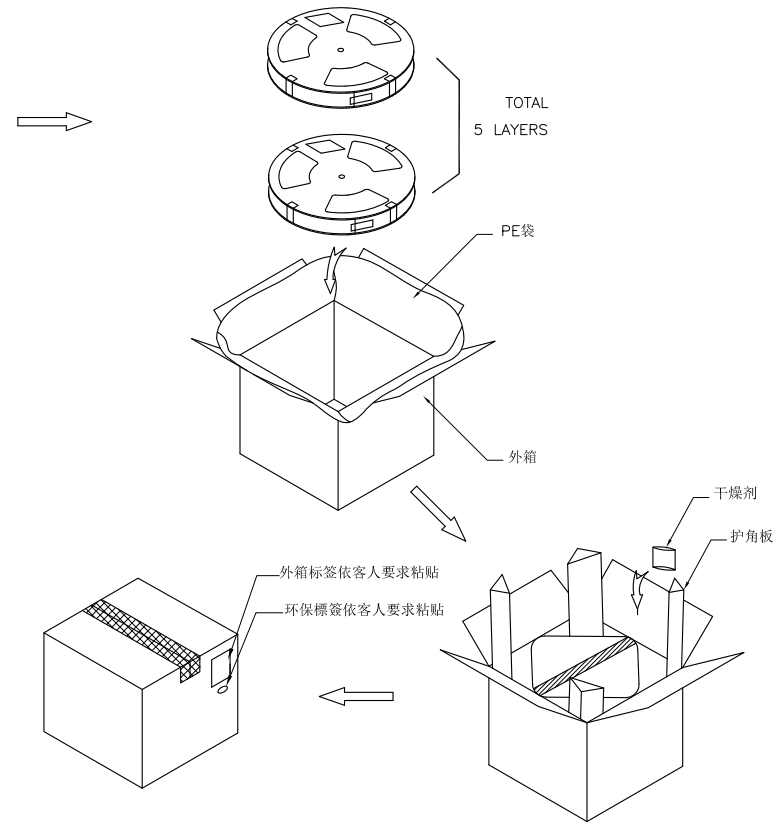
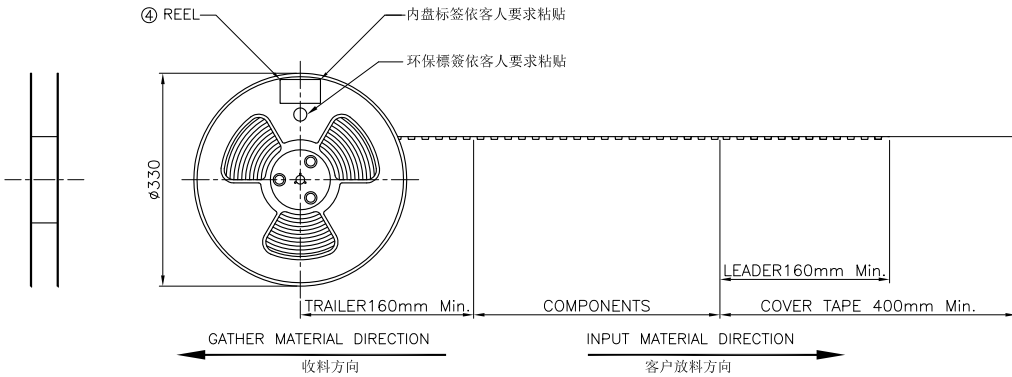
4

3

2

1

REVISIONS			
REV	DESCRIPTION	DWN	DATE
B	CHANGE THE QUANTITY OF PACKGE	ALDO	2017-02-22



PARTS PER SHIPPING CARTON	PARTS PER REEL (S.P.Q.)	TOTAL REELS PER SHIPPING CARTON
3500PCS	700(PCS)	5

Notes:
 1 COVER TAPE與CARRY TAPE剝離力: 20g~120g;
 剝離角度: 165°~175°;剝離速度: 250~300mm/min;

GENERAL TOLERANCES (OTHERWISE SPECIFIED)	SCALE NONE	DESIGN UNITS MILIMETER	
4 PLS ±	DRAWN BY ALDO	DATE 2016-11-07	
3 PLS ± 0.10	CHECKED BY	DATE	TITLE USB TYPE C CH=0.75mm H=2.43mm
2 PLS ± 0.20	APPROVED BY	DATE	PART NO. USB-085 SERIES
1 PLS ± 0.30	DRAWING NO. PK-USB085-001		
ANGLES ± °			
QUALITY SYMBOLS $\nabla=0$			
THIS DRAWING CONTAINS INFORMATION THAT IS PROPRIETARY TO VITECK CORP, LTD AND SHOULD NOT BE USED WITHOUT WRITTEN PERMISSION			THIRD ANGLE PROJECTION DWG REV. B SHEET NO. 1 OF 1 SIZE

7

6

5

4

3

2

1