

7

6

5

4

3

2

1

## REVISIONS

| REV | DESCRIPTION    | DWN  | DATE       |
|-----|----------------|------|------------|
| A   | PROPOSAL       | ALDO | 2015-10-13 |
| B   | Bend the shell | ALDO | 2017-08-25 |

## SPECIFICATION

## 1.ELECTRICAL CHARACTERISTICS:

1-1.CURRENT RATING:POWER PIN 14A,ID PIN:1A.

1-2.VOLTAGE RATNG:20V.

1-3.DIELECTRIC WITHSTANDING VOLTAGE:  
150V AC FOR 1MINUTE.

1-4.INSULATION RESISTANCE:100M OHMS MIN.

1-5.CONTACT RESISTANCE:

INITIAL:20m OHMS MAX.

AFTER 8000 CYCLES:30m OHMS MAX.

## 2.MECHANICAL CHARACTERISTICS:

2-1.DURABILITY(MATING/UNMATING CYCLES):&gt;8000 CYCLES.

2-2.MATING FORCE:1.00~2.50kgf(INITIAL),

1.00~2.50kgf(AFTER LIFE TEST)

2-3.UNMATING FORCE:1.00~2.50kgf(INITIAL),

1.00~2.50kgf(AFTER LIFE TEST)

## 3.ENVIRONMENTAL CHARACTERISTICS:

3-1.OPERATING TEMPERATURE AND HUMIDITY RANGE:

-40°C TO +85°C,85% RH OR LESS.

3-2.TEMPERATURE RISE NOT EXCEED 30°C.

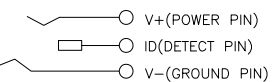
3.PART LEGEND: DCJ-025-1N03HX

Au PLATING ON CONTACT AREA

1: 5u" Au

6: 30u" Au

G: GOLD FLASH



CIRCUIT DIAGRAM

TITLE

DC POWER JACK CH=5.80mm

H=11.85mm OD=7.50mm

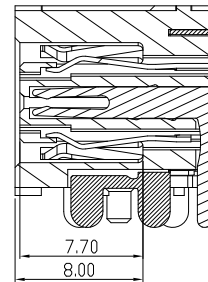
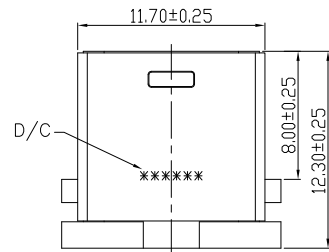
PART NO.

DCJ-025 SERIES

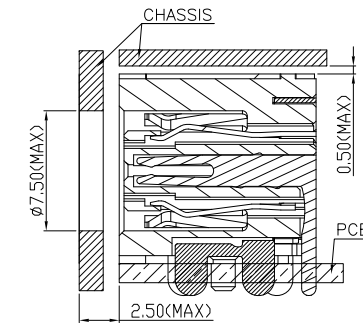
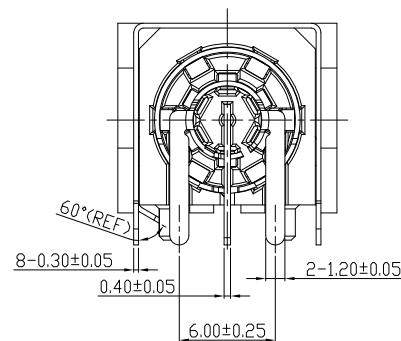
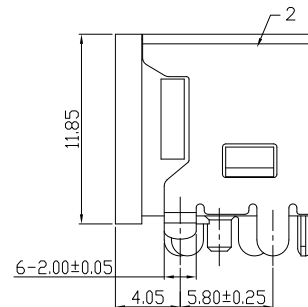
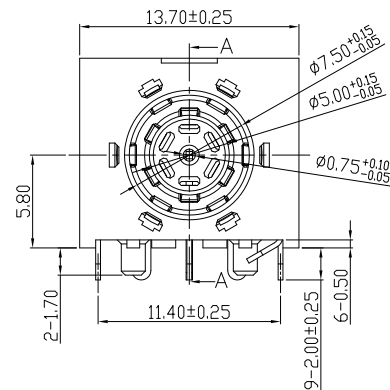
| GENERAL TOLERANCES<br>(OTHERWISE SPECIFIED)  |        | SCALE         | DESIGN UNITS |
|--|--------|---------------|--------------|
| 4 PLS  | ±      | NONE          | MILIMETER    |
| 3 PLS  | ±      | ALDO          | DATE         |
| 2 PLS  | ± 0.20 | CHECKED BY    | DATE         |
| 1 PLS  | ± 0.30 | APPROVED BY   | DATE         |
| ANGLES   | ± °    | DRAWING NO.   |              |
| QUALITY SYMBOLS  | ▽=0    | SD-DCJ025-001 |              |
| THIS DRAWING CONTAINS INFORMATION THAT IS PROPRIETARY TO VITECK CORP., LTD AND SHOULD NOT BE USED WITHOUT WRITTEN PERMISSION |        |               |              |

DWG REV.  
BSHEET NO.  
1 OF 1

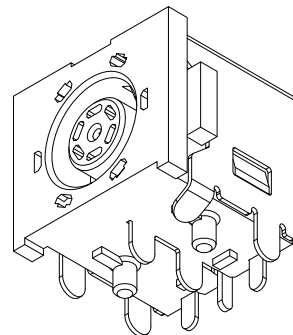
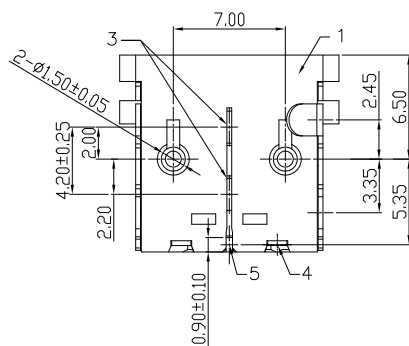
SIZE



SECTION A-A

OVERLOADING TEST  
RECOMMENDED MATING CONDITION BETWEEN  
CONNECTOR AND CHASSIS

| No. | DESC    | QTY | Material                 | TREATMENT   |
|-----|---------|-----|--------------------------|---|
| 5   | I.D.PIN | 1   | PHOSPHOR BRONZE (T=0.40) | GOLD PLATING ON CONTACT AREA<br>50u" TIN MIN ON SOLDER TAIL AREA<br>50u" NI MIN OVERALL |
| 4   | POWER   | 1   | C7035 (T=0.30)           | GOLD PLATING ON CONTACT AREA<br>50u" TIN MIN ON SOLDER TAIL AREA<br>50u" NI MIN OVERALL |
| 3   | GROUND  | 1   | SUS(201)(T=0.30)         | 50u" NI MIN   |
| 2   | SHELL   | 1   | LCP                      | BLACK   |



7

6

5

4

3

2

1

7

6

5

4

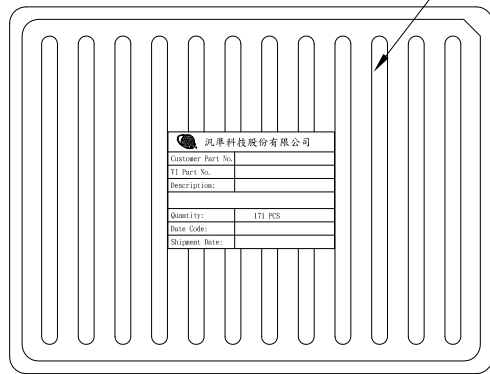
3

2

1

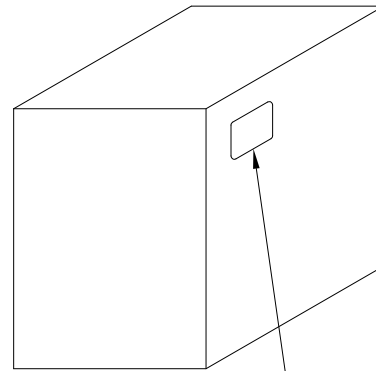
| REVISIONS |                           |      |            |
|-----------|---------------------------|------|------------|
| REV       | DESCRIPTION               | DWN  | DATE       |
| B         | Change the way of packing | ALDO | 2017-08-29 |

圖1: 電子盒外觀圖



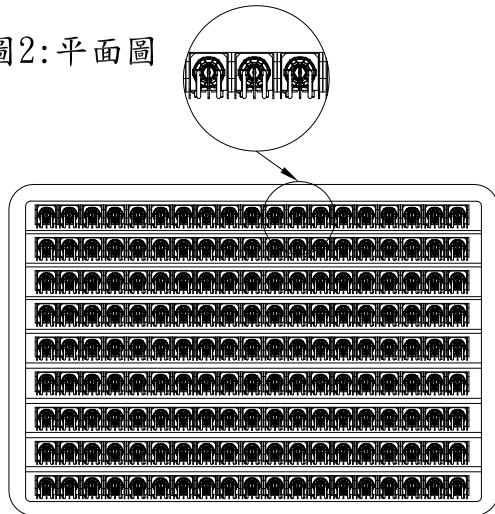
|                   |         |
|-------------------|---------|
| 汎卓科技股份有限公司        |         |
| Customer Part No. |         |
| PL Part No.       |         |
| Description:      |         |
| Quantity:         | 171 PCS |
| Date Code:        |         |
| Shipment Date:    |         |

圖3: 紙箱外觀

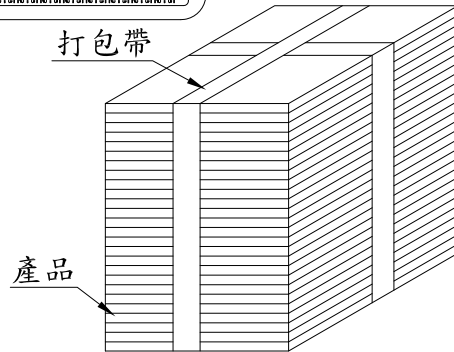


| PARTS PER SHIPPING CARTON | PARTS PER TRAY (S.P.Q.) | TOTAL TRAYS PER SHIPPING CARTON |
|---------------------------|-------------------------|---------------------------------|
| 2223 (PCS)                | 171 (PCS)               | 13                              |

圖2: 平面圖



| 材料 | 名稱  | 型號(mm)                                    | 顏色 | 數量  |
|----|-----|---|----|-----|
| 1  | 紙箱  | 12*9 $\frac{1}{4}$ *10 $\frac{1}{4}$ (in) | 土黃 | 1個  |
| 2  | 電子盒 | 290*220mm                                 | 透明 | 13個 |
| 3  | 盒蓋  | 290*220mm                                 |    |     |
| 4  | 膠袋  | 600*600mm                                 | 透明 | 1個  |
| 5  | 紙板  | 290*220*4mm                               | 土黃 | 2個  |
| 6  | 保利龍 | 290*220*10mm                              | 白色 | 2個  |



|  |  |                                  |
|--|--|----------------------------------|
| GENERAL TOLERANCES (OTHERWISE SPECIFIED) | SCALE NONE   | DESIGN UNITS MILIMETER           |
| 4 PLS ± mm                               | DRAWN BY ALDO  | DATE 2017-02-08                  |
| 3 PLS ±                                  | CHECKED BY   | DATE                             |
| 2 PLS ± 0.20                             | APPROVED BY  | DATE                             |
| 1 PLS ± 0.30                             | DRAWING NO. PK-DCJ025-001  | PART NO. DCJ-025 SERIES          |
| ANGLES ± °                               | THIS DRAWING CONTAINS INFORMATION THAT IS PROPRIETARY TO VITECK CORP., LTD AND SHOULD NOT BE USED WITHOUT WRITTEN PERMISSION |                                  |
| QUALITY SYMBOLS $\nabla \sqrt{0}$        | THIRD ANGLE PROJECTION   | DWG REV. B SHEET NO. 1 OF 1 SIZE |

**VITECK CO., LTD.**

TITLE  
DC POWER JACK CH=5.80mm  
H=11.85mm OD=7.50mm

7

6

5

4

3

2

1