

8 7 6 5 4 3 2 1

HALOGEN FREE

REVISIONS

| REV. | DESCRIPTION | DWN | DATE |
|------|------------------------|-----------|------------|
| 7 | ADD SHEET NO.2 | JACK WU | 2017-04-10 |
| 8 | ADD PLUG'S INFORMATION | Kelly Yen | 2017-11-10 |

NOTES:

1. MATERIAL:

- 1-1: HOUSING: LCP(E6808); UL 94V-0, COLOR: BLACK
COLOR: BLACK
- 1-2: GROUND PIN: PHOSPHOR BRONZE(C5210R-EH); T=0.25mm
TREATMENT:
Au Plating at contact area(See Note 6)
With 50u"Ni min UnderPlating overall
- 1-3: POWER PIN: PHOSPHOR BRONZE(C5210R-EH); T=0.25mm
TREATMENT:
Au Plating at contact area(See Note 6)
With 50u"Ni min UnderPlating overall
- 1-4: DETECT PIN: PHOSPHOR BRONZE(C5210R-EH); T=0.35mm
TREATMENT:
Au Plating at contact area(See Note 6)
With 50u"Ni min UnderPlating overall
- 1-5: SHELL: SUS(201); T=0.20mm, TREATMENT: 50u" Ni
- 1-6: STOPPLE: LCP(E6808); UL 94V-0, COLOR: BLACK

2. ELECTRICAL CHARACTERISTICS:

- 1.1 CONNECTOR RATED CURRENT: 7.0A & 30° MAX ΔT OVER AMBIENT
RATED VOLTAGE: 19V DC
- 1.2 INSULATION RESISTANCE 50MOHMS MIN AT
500V DC AFTER 1 MINUTE
- 1.3 DIELECTRIC WITHSTANDING VOLTAGE: 500V AC FOR 1 MINUTE,
- 1.4 CONTACT RESISTANCE: 30 mOHMS MAX.

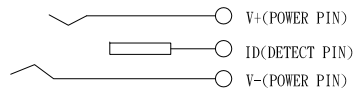
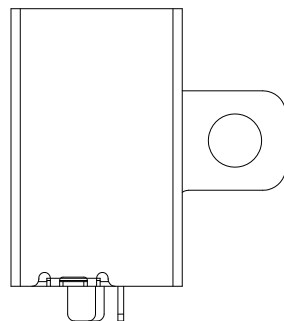
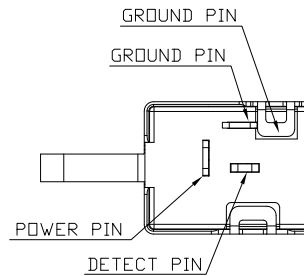
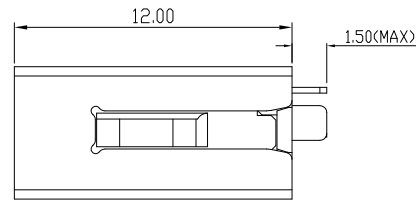
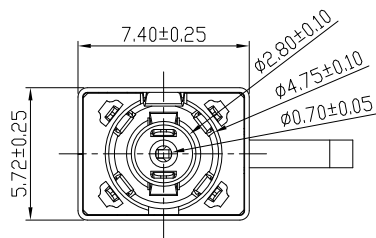
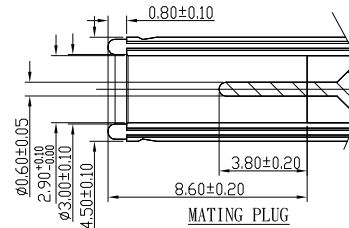
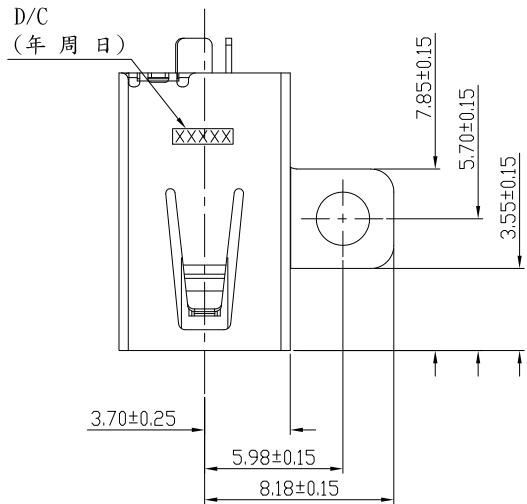
3. MECHANICAL CHARACTERISTICS:

- 2.1 INSERTION FORCE: 0.7-2.0 Kgf MAX
EXTRACTION FORCE: 0.6-2.0 Kgf
- 2.2 DURABILITY(INSERTION/EXTRACTION CYCLES): 5000 CYCLES
- 4. REMARK: MOISTURE SENSITIVE DEVICE MSL6-AFTER PACKAGING
HAS BEEN OPENED 8 HOURS, PARTS MUST BE BAKED FOR MIN
5. DAYS AT 40°C & 5% RH
- 6. PART NO:

DCJ-014-1N03HX

PLATE ON CONTACT AREA:

- 1: 5u" Au
- 7: Pd/Ni 30u" min with 5u" Au



| GENERAL TOLERANCES (OTHERWISE SPECIFIED) | | SCALE 1 : 1 | DESIGN UNITS MILIMETER |
|---|----------------|------------------------------|---------------------------|
| 4 PLS | ± | RAWN BY Kelly Yen | DATE 2017-11-10 |
| 3 PLS | ± | CHECKED BY | DATE |
| 2 PLS | ± 0.20 | APPROVED BY | DATE |
| 1 PLS | ± 0.30 | | |
| ANGLES | ±1° | | |
| QUALITY SYMBOLS | $\nabla C = 0$ | DRAWING NO. SD-DCJ014-001 | |

VITECK CO., LTD.

TITLE
DC POWER JACK RECEPTACLE
WITH SCREW HOLE

PART NO.
DCJ-014 SERIES

THIS DRAWING CONTAINS INFORMATION THAT IS PROPRIETARY TO VITECK CORP, LTD AND SHOULD NOT BE USED WITHOUT WRITTEN PERMISSION



THIRD ANGLE
PROJECTION

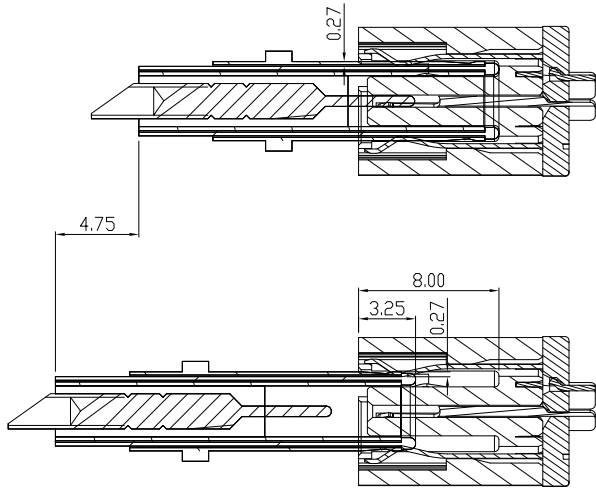
| DWG REV. | SHEET NO. | SIZE |
|----------|-----------|------|
| 8 | 1 of 1 | F |

2 1

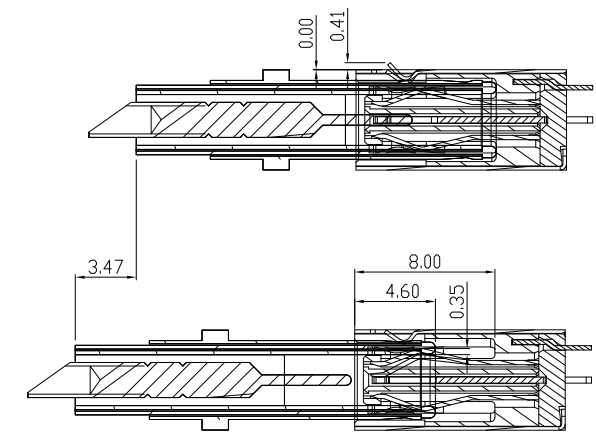
8 7 6 5 4 3 2 1

F

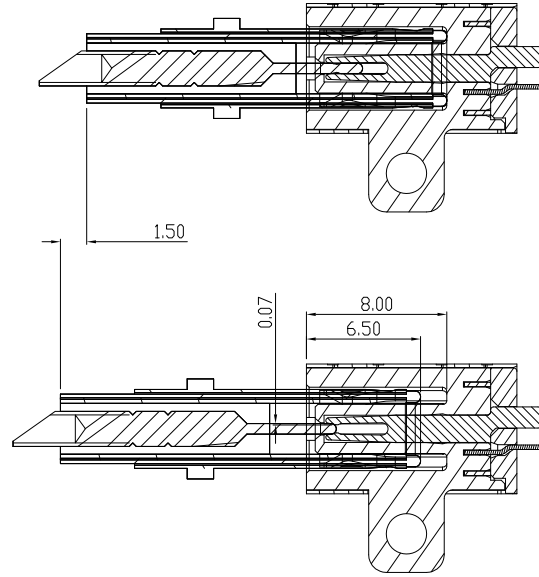
HALOGEN FREE



GROUND PIN WIPING DISTANCE



POWER PIN WIPING DISTANCE



DETECT PIN WIPING DISTANCE

CONTACT SEQUENCE: GROUND CONTACT
 --POWER CONTACT--DETECT CONTACT

| | | | | | |
|---|--------|------------------------------|---------------------------|--|---------------------------|
| GENERAL TOLERANCES (OTHERWISE SPECIFIED) | | SCALE 1 : 1 | DESIGN UNITS MILIMETER | | VITECK CO., LTD. |
| 4 PLS | ± | RAWN BY Kelly Yen | DATE 2017-11-10 | | |
| 3 PLS | ± | CHECKED BY | DATE | | |
| 2 PLS | ± 0.20 | APPROVED BY | DATE | | |
| 1 PLS | ± 0.30 | DRAWING NO. SD-DCJ014-001 | DATE | | |
| ANGLES ±1° | | PART NO. DCJ-014 SERIES | | | THIRD ANGLE PROJECTION |
| QUALITY SYMBOLS $\nabla C = 0$ | | DWG REV. 8 | SHEET NO. 1 of 1 | | SIZE F |
| THIS DRAWING CONTAINS INFORMATION THAT IS PROPRIETARY TO VITECK CORP, LTD AND SHOULD NOT BE USED WITHOUT WRITTEN PERMISSION | | | | | |

7

6

5

4

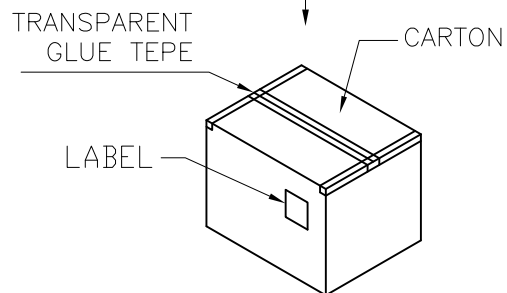
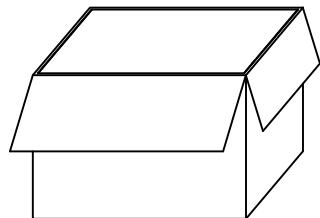
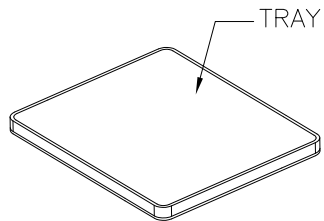
3

2

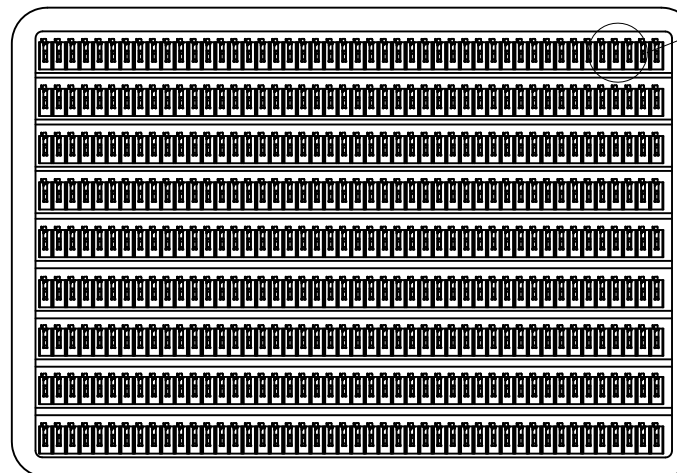
1

| REVISIONS | | | |
|-----------|----------------|-------|------------|
| REV | DESCRIPTION | DWN | DATE |
| A | PROPOSAL | ALDO | 2015-12-14 |
| B | UPDATE PACKING | KELLY | 2018-05-15 |

E



D



C

B

A

| PARTS PER SHIPPING CARTON | PARTS PER REEL (S.P.Q.) | TOTAL REELS PER SHIPPING CARTON |
|---------------------------|-------------------------|---------------------------------|
| 5382(PCS) | 414(PCS) | 13 |

| | | |
|--|-------------------|------------------------------|
| GENERAL TOLERANCES (OTHERWISE SPECIFIED) | SCALE NONE | DESIGN UNITS MILIMETER |
| 4 PLS ± 3 PLS ± 2 PLS ± 0.20 1 PLS ± 0.30 | DRAWN BY KELLY | DATE 2018-05-15 |
| ANGLES ± ° | CHECKED BY | DATE |
| QUALITY SYMBOLS ▽=0 | APPROVED BY | DATE |
| THIS DRAWING CONTAINS INFORMATION THAT IS PROPRIETARY TO VITECK CORP., LTD AND SHOULD NOT BE USED WITHOUT WRITTEN PERMISSION | | DRAWING NO. PK-DCJ014-001 |

VITECK CO., LTD.

TITLE
DC POWER JACK RECEPTACLE
WITH SCREW HOLE

PART NO.
DCJ-014 SERIES

THIRD ANGLE
PROJECTION

| | | |
|---------------|---------------------|------|
| DWG REV. B | SHEET NO. 1 OF 1 | SIZE |
|---------------|---------------------|------|

7

6

5

4

3

2

1