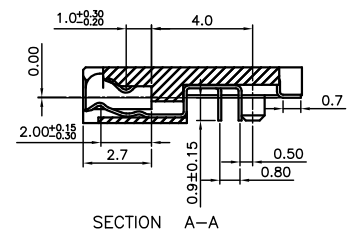
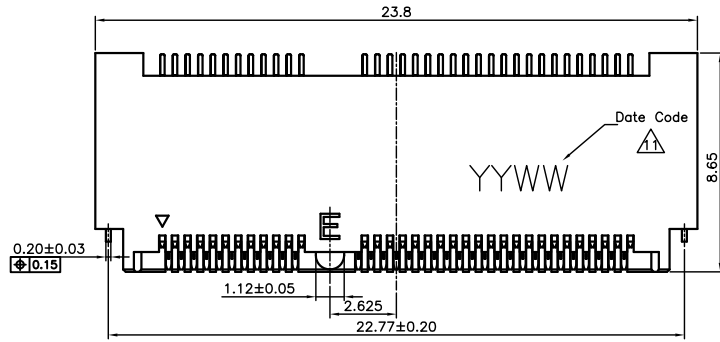
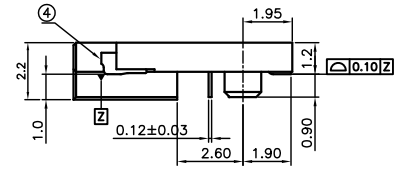
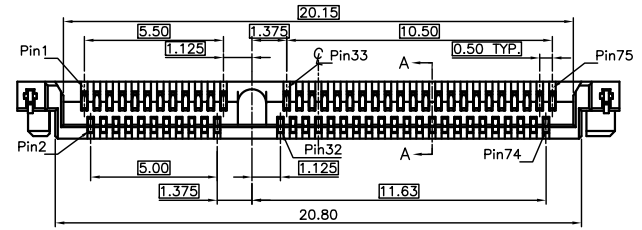


REVISIONS			
REV	DESCRIPTION	DWN	DATE
10	UPDATE DRAWING	Kelly Yen	2018-07-03
11	UPDATE DATE CODE	Kelly Yen	2018-10-15



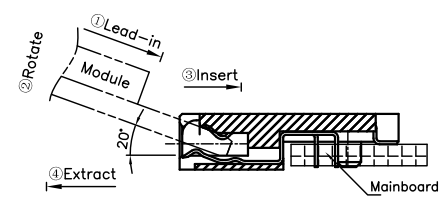
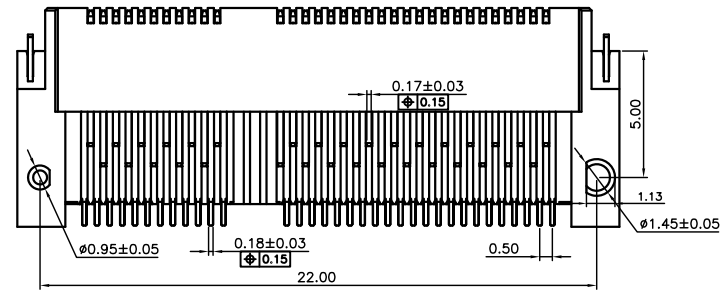
NOTES:

- MATERIAL:
 - HOUSING: HIGH TEMP. THERMAL PLASTIC (LCP), GLASS FIBER FILLED, UL94V-0, COLOR:BLACK.
 - CONTACT: PHOSPHOR BRONZE.
 - FITTING NAIL: BRASS.
- PLATING:
 - CONTACT: SELECTIVE PLATING ON CONTACT AREA AND SOLDER TAIL AREA(SEE NOTE 5), 50u"MIN. NICKEL UNDERPLATING OVER ALL.
 - FITTING NAIL: 100u"MIN. MATTE-TIN PLATING OVER ALL, 50u"MIN. NICKEL UNDERPLATING OVER ALL.
- DATE CODE:YY(YEAR),MM(MONTH),DD(DATE).
- ROHS AND HALOGEN FREE COMPLIANT.
- PART NUMBER LEGEND:M2N-002-XE67HX



PLATING ON SOLDER TAIL AREA:
 1: 100u"MIN. MATTE-TIN
 2: GOLD FLASH

PLATING ON CONTACT AREA:
 G: GOLD FLASH
 2: 10u" GOLD
 6: 30u" GOLD



How to mate and unmate
 Mate: ①-②-③
 Unmate: ④

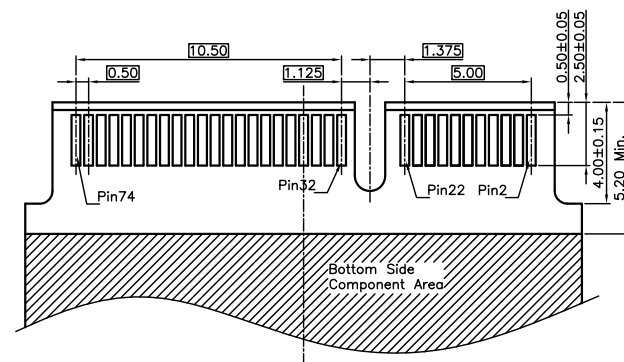
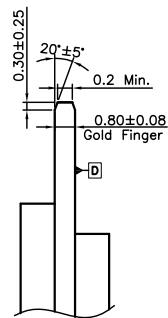
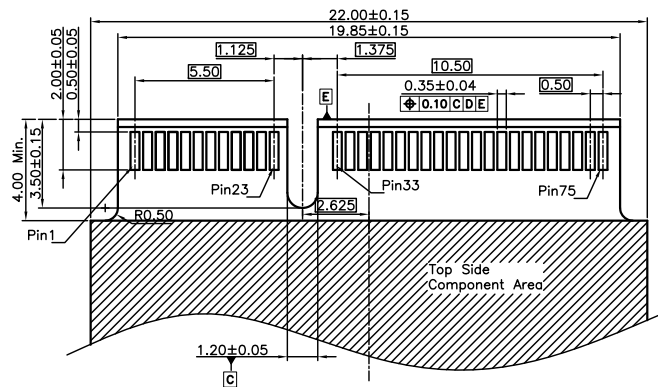
GENERAL TOLERANCES (OTHERWISE SPECIFIED)	SCALE 1 : 1	DESIGN UNITS MILIMETER
4 PLS ±	DRAWN BY Kelly Yen	DATE 2018-10-15
3 PLS ±	CHECKED BY	DATE
2 PLS ± 0.20	APPROVED BY	DATE
1 PLS ± 0.25		
ANGLES ± °		
QUALITY SYMBOLS ▽=0	DRAWING NO. SD-M2N002-002	PART NO. M2N-002 SERIES



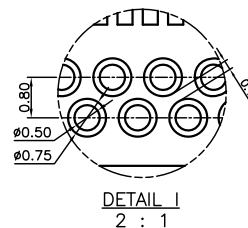
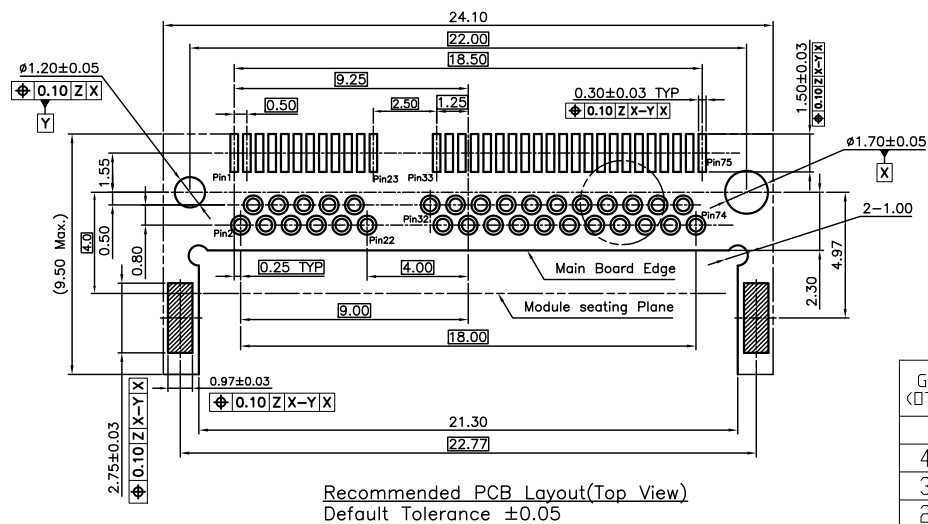
TITLE
 NGFF SOCKET (M.2 CONNECTOR)
 MID-PLANE STD TYPE, DIP&SMT, H=1.2
 KEY E

THIS DRAWING CONTAINS INFORMATION THAT IS PROPRIETARY TO VITECK CORP., LTD AND SHOULD NOT BE USED WITHOUT WRITTEN PERMISSION

THIRD ANGLE PROJECTION	DWG REV. 11	SHEET NO. 1 OF 2	SIZE
------------------------	----------------	---------------------	------



Recommended Mould Finger Layout
Default Tolerance ±0.05



Recommended PCB Layout(Top View)
Default Tolerance ±0.05

GENERAL TOLERANCES (OTHERWISE SPECIFIED)		SCALE 1 : 1	DESIGN UNITS MILIMETER		
4 PLS	±	DRAWN BY Kelly Yen	DATE 2018-10-15		TITLE NGFF SOCKET (M.2 CONNECTOR)
3 PLS	±	CHECKED BY	DATE	MID-PLANE STD TYPE, DIP&SMT, H=1.2	
2 PLS	± 0.20	APPROVED BY	DATE	KEY E	
1 PLS	± 0.25			PART NO. M2N-002 SERIES	
ANGLES	± °	DRAWING NO. SD-M2N002-002			
QUALITY SYMBOLS		THIS DRAWING CONTAINS INFORMATION THAT IS PROPRIETARY TO VITECK CORP, LTD AND SHOULD NOT BE USED WITHOUT WRITTEN PERMISSION		THIRD ANGLE PROJECTION	
				DWG. REV. 11	SHEET NO. 2 OF 2
				SIZE	

7

6

5

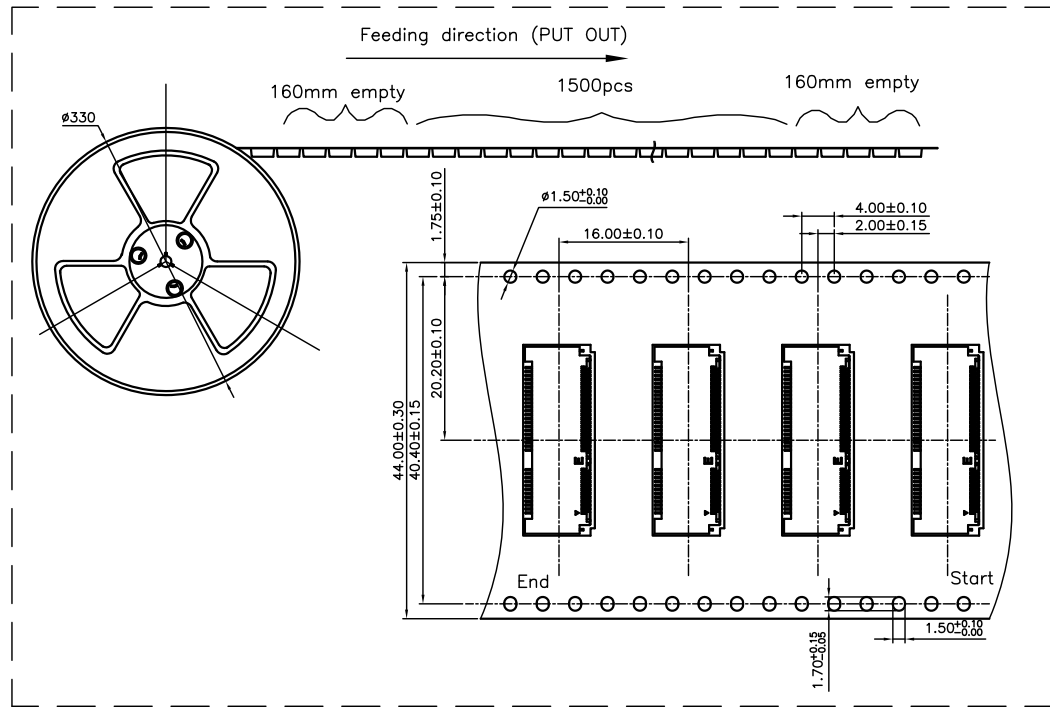
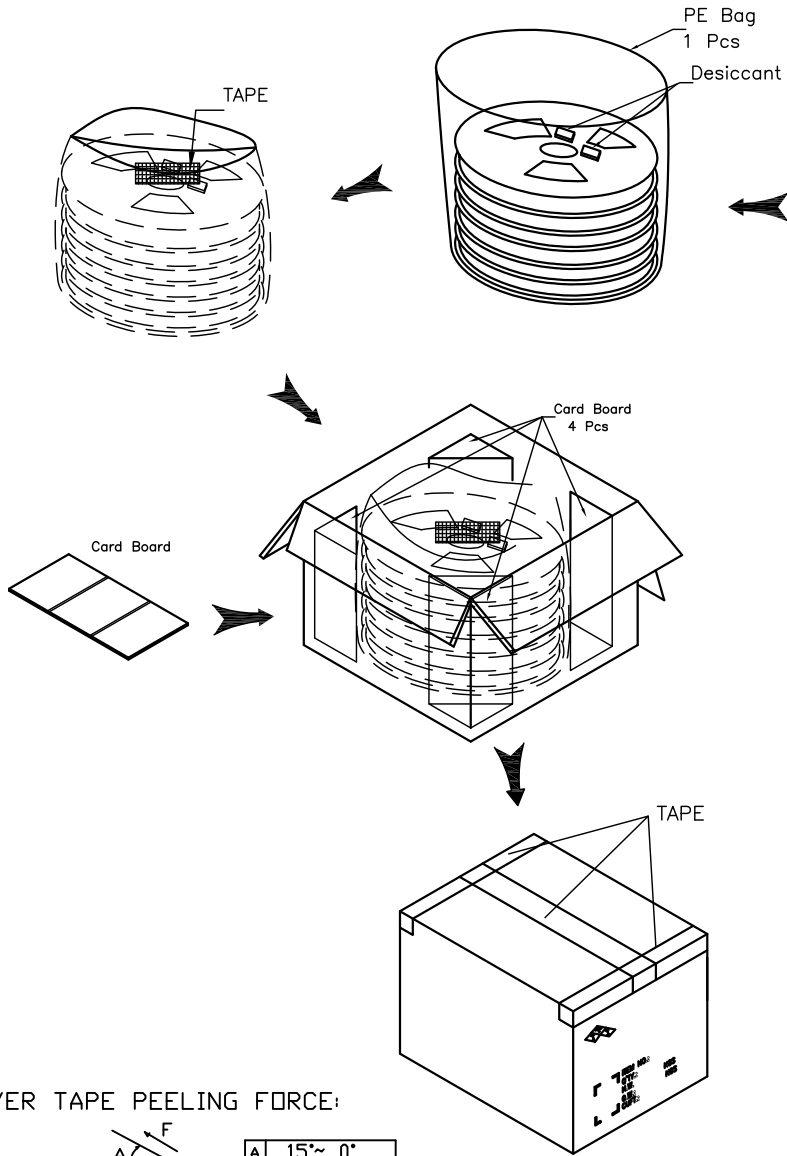
4

3

2

1

REVISIONS			
REV	DESCRIPTION	DWN	DATE
4	PROPOSAL	ALDO	2015-12-07

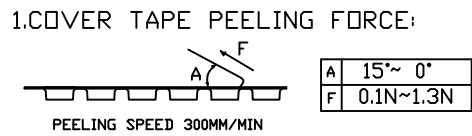


PRODUCT P/N	PARTS PER SHIPPING CARTON	PARTS PER REEL (S.P.Q.)	TOTAL REELS PER SHIPPING CARTON
M2N-004 SERIES	10500(PCS)	1500(PCS)	7

GENERAL TOLERANCES (OTHERWISE SPECIFIED)	SCALE 1 : 1	DESIGN UNITS MILIMETER
4 PLS ±	DRAWN BY MAX	DATE 2014-07-14
3 PLS ±	CHECKED BY	DATE
2 PLS ± 0.20	APPROVED BY	DATE
1 PLS ± 0.25	ANGLES ± °	
QUALITY SYMBOLS ∇=0	DRAWING NO. PK-M2N002-002	PART NO. M2N-002 SERIES



TITLE
NGFF SOCKET (M.2 CONNECTOR)
STD TYPE, SMT, H=1.2, KEY E



2. PART DIMENSIONS MEET EIA-481-2-A REQUIREMENT

THIS DRAWING CONTAINS INFORMATION THAT IS PROPRIETARY TO VITECK CORP., LTD AND SHOULD NOT BE USED WITHOUT WRITTEN PERMISSION		THIRD ANGLE PROJECTION	DWG. REV. 4	SHEET NO. 1 OF 1	SIZE
--	--	------------------------	-------------	------------------	------

7

6

5

4

3

2

1