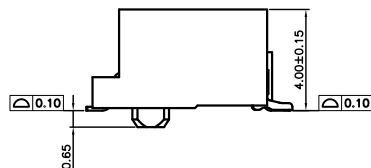
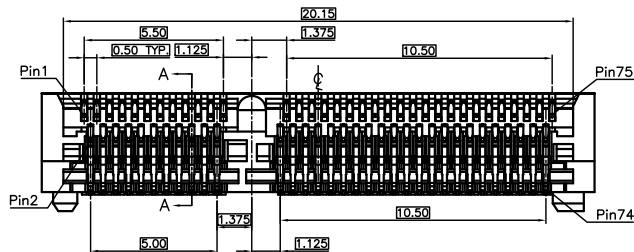
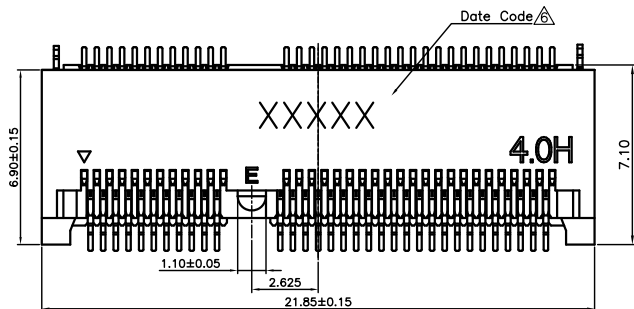


REVISIONS			
REV	DESCRIPTION	DWN	DATE
5	UPDATE NOTE	KELLY	2018-03-14
6	UPDATE DATE CODE	KELLY	2018-07-26



NOTES:

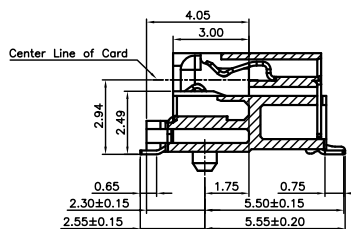
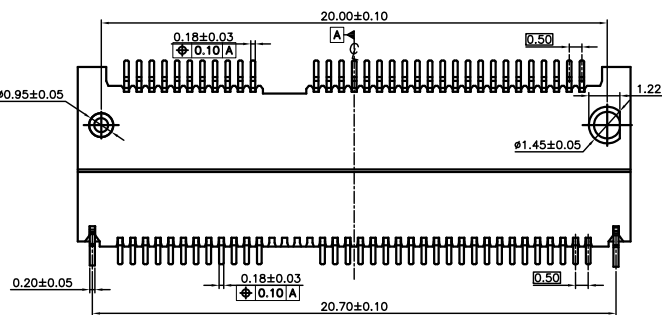
- MATERIAL:
 - HOUSING: HIGH TEMP. THERMAL PLASTIC (LCP), GLASS FIBER FILLED, UL94V-0, COLOR:BLACK.
 - CONTACT: PHOSPHOR BRONZE, T=0.15mm.
 - FITTING NAIL: BRASS, T=0.20mm.
- PLATING:
 - CONTACT: Au PLATING ON CONTACT AREA, SEE NOTE 5, 100u"MIN. MATTE-TIN ON SOLDERING TAILS, 50u"MIN. NICKEL UNDERPLATING OVER ALL.
 - FITTING NAIL: 100u"MIN. MATTE-TIN PLATING OVER ALL, 50u"MIN. NICKEL UNDERPLATING OVER ALL.
- DATE CODE: YY(YEAR), MM(MONTH), DD(DATE).
- ROHS AND HALOGEN FREE COMPLIANT.
- PART NUMBER LEGEND: M2N-004-1E67HX

- Au PLATING OF CONTACT AREA.
- G: GOLD FLASH
- 2: 10u"
- 3: 15u"
- 6: 30u"

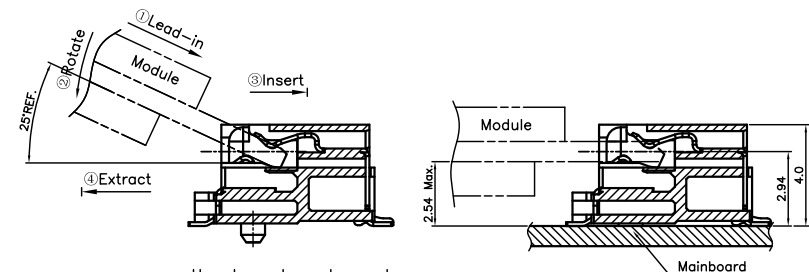
Definition of Date Code

XXXXXX

- The day of week. ex: Monday→1, Saturday→6
- The Month No. of Year ex: 2018/07/25→30
- Year of Production. ex: 2018→8, 2016→6
- Place of Production. It should be marked in No..

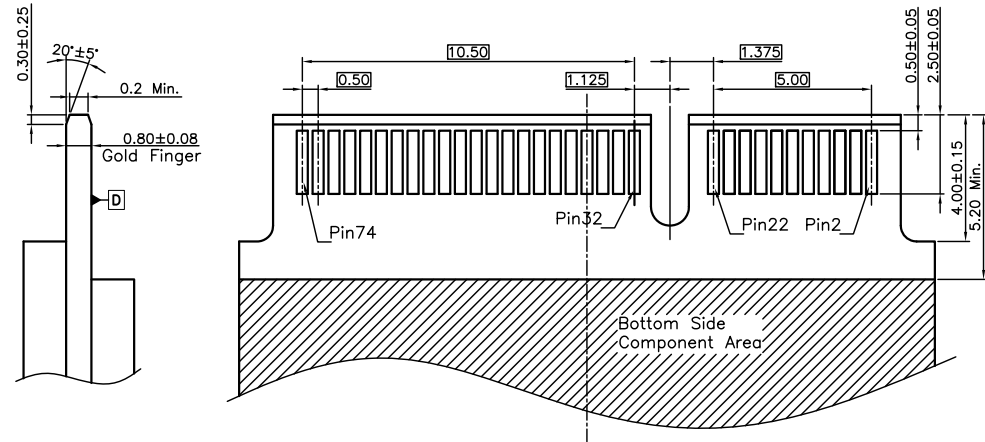
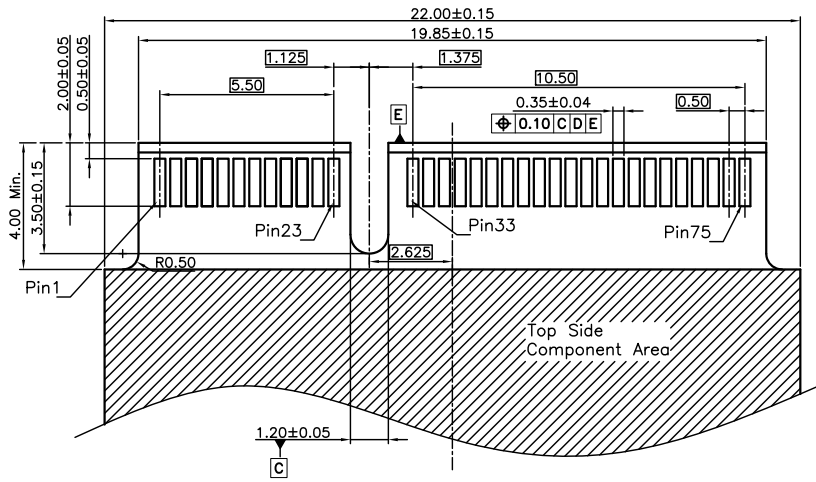


SECTION A-A

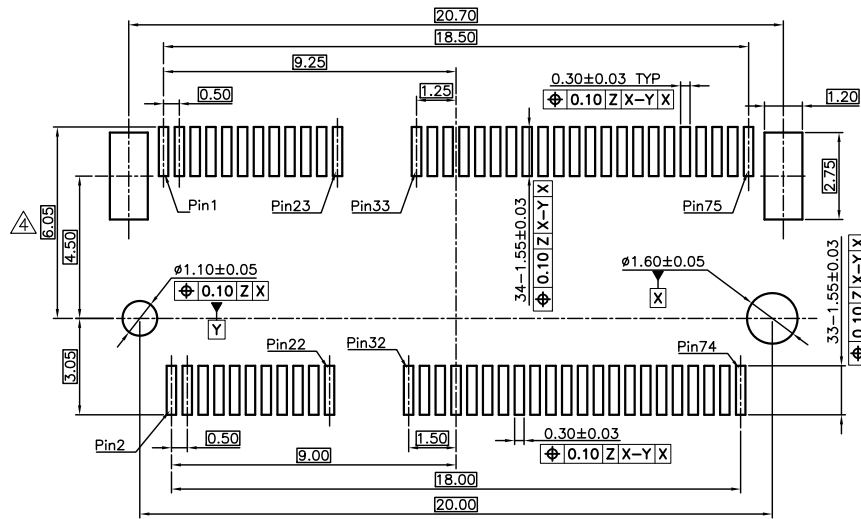


How to mate and unmate
 Mate: ① - ② - ③
 Unmate: ④

GENERAL TOLERANCES (OTHERWISE SPECIFIED)	SCALE 1 : 1	DESIGN UNITS MILIMETER	
4 PLS ±	DRAWN BY Kelly Yen	DATE 2018-07-26	
3 PLS ±	CHECKED BY	DATE	PART NO. M2N-004 SERIES
2 PLS ± 0.15	APPROVED BY	DATE	
1 PLS ± 0.20	DRAWING NO. SD-M2N004-005		DWG REV. 6
ANGLES ± °			SHEET NO. 1 OF 2
QUALITY SYMBOLS ▽=0	THIS DRAWING CONTAINS INFORMATION THAT IS PROPRIETARY TO VITECK CORP., LTD AND SHOULD NOT BE USED WITHOUT WRITTEN PERMISSION		THIRD ANGLE PROJECTION
			SIZE



Recommended Mould Finger Layout
Default Tolerance ± 0.05



Recommended PCB Layout (Top View)
Default Tolerance ± 0.05

GENERAL TOLERANCES (OTHERWISE SPECIFIED)		SCALE 1 : 1	DESIGN UNITS MILIMETER	
4 PLS	\pm	DRAWN BY Kelly Yen	DATE 2018-07-26	
3 PLS	\pm	CHECKED BY	DATE	PART NO. M2N-004 SERIES
2 PLS	± 0.15	APPROVED BY	DATE	
1 PLS	± 0.20			
ANGLES	\pm °	DRAWING NO. SD-M2N004-005		
QUALITY SYMBOLS	$\nabla = 0$	THIS DRAWING CONTAINS INFORMATION THAT IS PROPRIETARY TO VITECK CORP, LTD AND SHOULD NOT BE USED WITHOUT WRITTEN PERMISSION		THIRD ANGLE PROJECTION
		DWG REV. 6	SHEET NO. 2 OF 2	SIZE

7

6

5

4

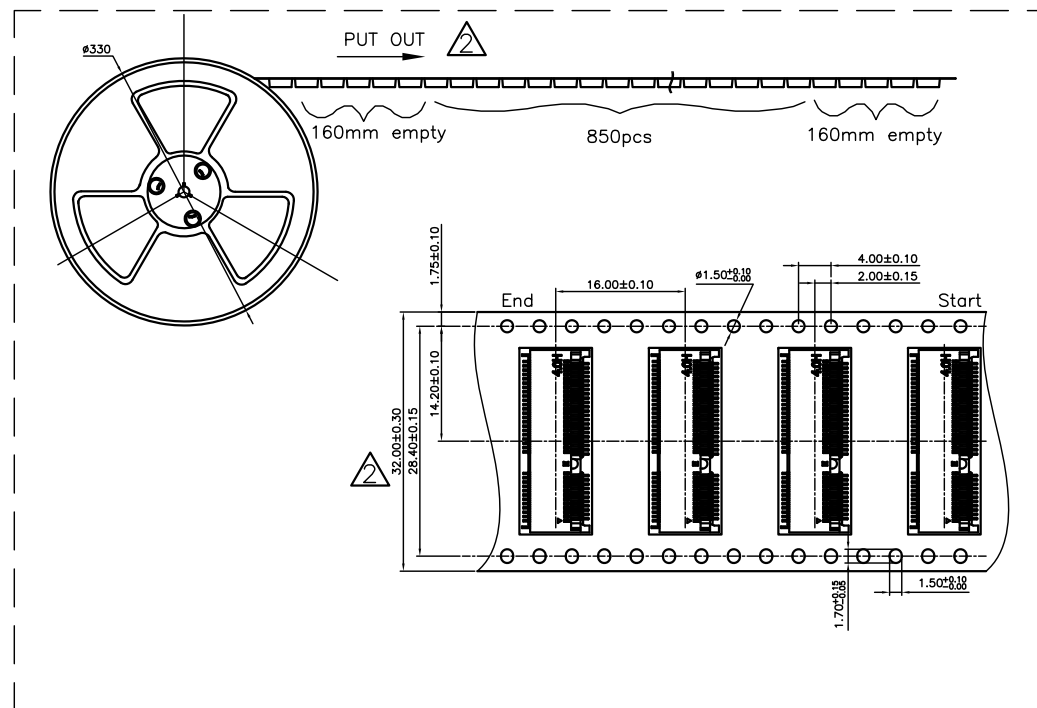
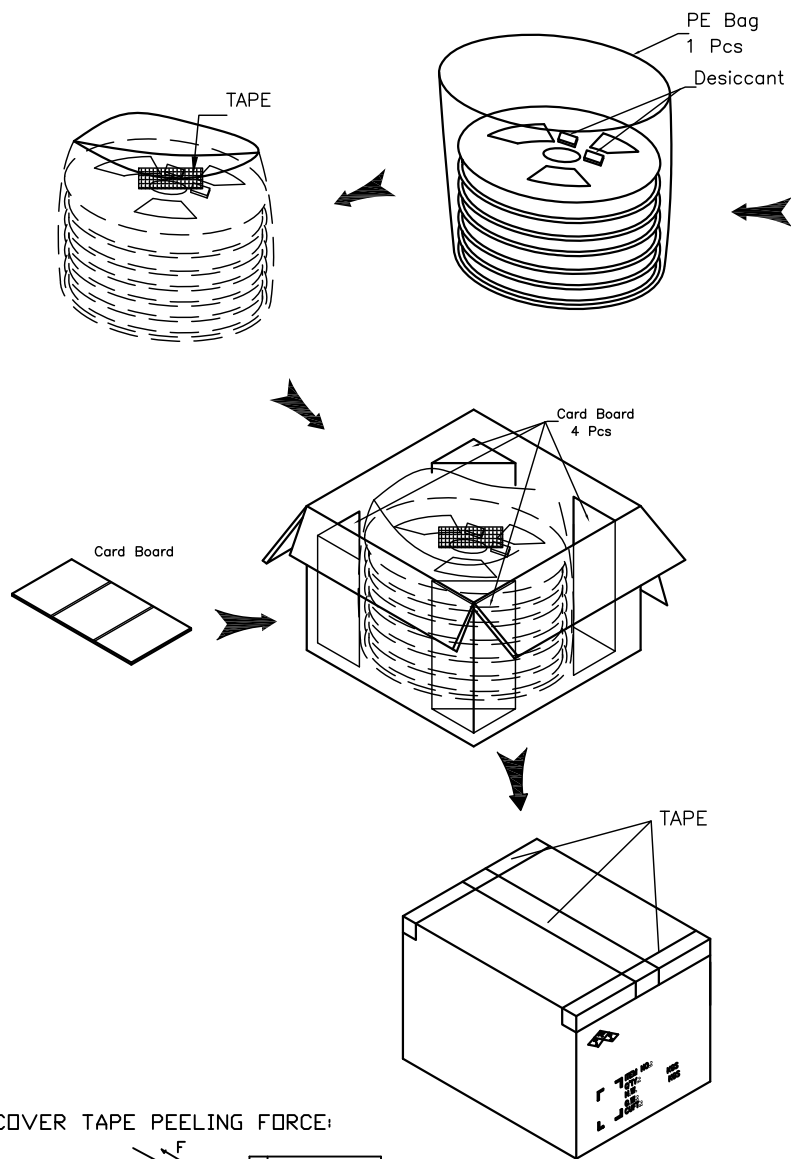
3

2

1

REVISIONS

REV	DESCRIPTION	DWN	DATE
2	PROPOSAL	E DEN	2015-05-07



PRODUCT P/N	PARTS PER SHIPPING CARTON	PARTS PER REEL (S.P.Q.)	TOTAL REELS PER SHIPPING CARTON
M2N-004 SERIES	8500(PCS) Δ	850(PCS)	10 Δ

GENERAL TOLERANCES (OTHERWISE SPECIFIED)	SCALE	DESIGN UNITS
4 PLS \pm	1 : 1	MILIMETER
3 PLS \pm		
2 PLS ± 0.20		
1 PLS ± 0.25		
ANGLES \pm °		
QUALITY SYMBOLS ∇ = 0		

DRAWN BY	DATE
EDEN	2015-05-07
CHECKED BY	DATE
APPROVED BY	DATE

DRAWING NO.
PK-M2N004-005

TITLE

NGFF SOCKET (M.2 CONNECTOR)
STD TYPE, SMT, H=4.0, KEY E

PART NO.

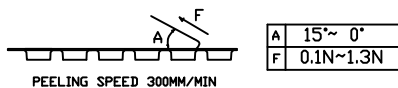
M2N-004 SERIES

THIS DRAWING CONTAINS INFORMATION THAT IS PROPRIETARY TO VITECK CORP, LTD AND SHOULD NOT BE USED WITHOUT WRITTEN PERMISSION

THIRD ANGLE PROJECTION

DWG REV.	SHEET NO.	SIZE
2	1 OF 1	

1. COVER TAPE PEELING FORCE:



2. PART DIMENSIONS MEET EIA-481-2-A REQUIREMENT

7

6

5

4

3

2

1