

7 6 5 4 3 2 1

HALOGEN FREE

REVISIONS

REV	DESCRIPTION	DWN	DATE
6	MODIFY P/N	JACK WU	2017-06-23
7	UPDATE DATE CODE	KELLY	2018-10-15

NOTES:

- MATERIAL:
 - HOUSING: HIGH TEMP. THERMAL PLASTIC (LCP), GLASS FIBER FILLED, UL94V-0, COLOR: BLACK.
 - CONTACT: PHOSPHOR BRONZE.
 - FITTING NAIL: BRASS.
- PLATING:
 - CONTACT: SELECTIVE PLATING ON CONTACT AREA, AND SOLDER TAIL AREA (SEE NOTE 5), 50u" MIN. NICKEL UNDERPLATING OVER ALL.
 - FITTING NAIL: 100u" MIN. MATTE-TIN PLATING OVER ALL, 50u" MIN. NICKEL UNDERPLATING OVER ALL.
- DATE CODE: YY(YEAR), MM(MONTH), DD(DATE).
- ROHS AND HALOGEN FREE COMPLIANT.
- PART NUMBER LEGEND: M2N-006-XE67HX

PLATING ON SOLDER TAIL AREA:

- 100u" MIN. MATTE-TIN
- GOLD FLASH

PLATING ON CONTACT AREA.

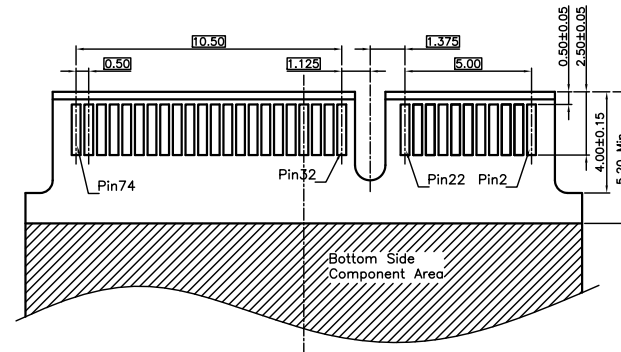
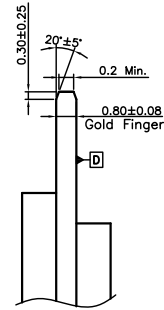
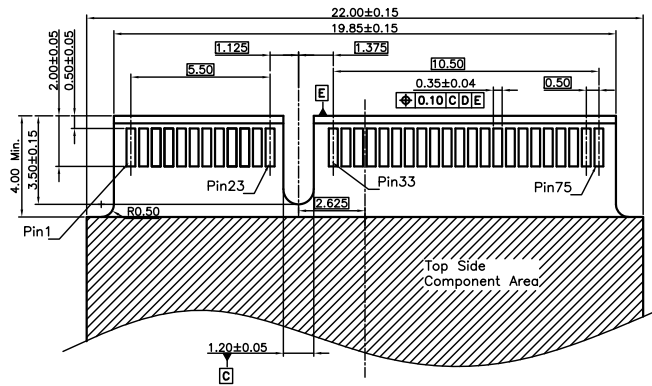
- G: GOLD FLASH
- 10u" GOLD
- 15u" GOLD

How to mate and unmate
Mate: ① - ② - ③
Unmate: ④

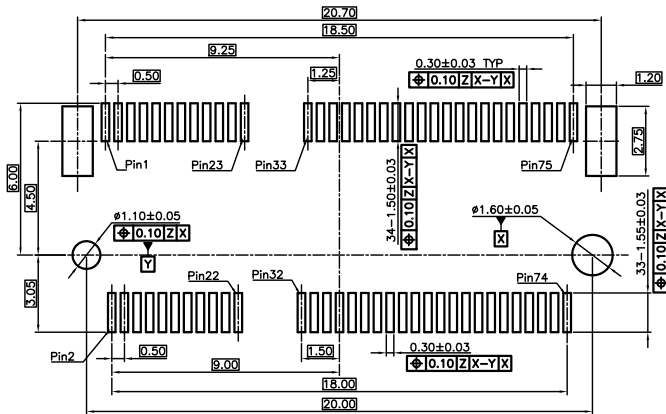
GENERAL TOLERANCES (OTHERWISE SPECIFIED)	SCALE 1 : 1	DESIGN UNITS MILIMETER	
4 PLS ±	DRAWN BY KELLY	DATE 2018-10-15	
3 PLS ±	CHECKED BY	DATE	TITLE NGFF SOCKET (M.2 CONNECTOR) C/H OFFSET 5.32mm STD TYPE, SMT, H=6.4 KEY E
2 PLS ± 0.20	APPROVED BY	DATE	
1 PLS ± 0.25	DRAWING NO. SD-M2N006-005	PART NO. M2N-006 SERIES	
ANGLES ± °	THIS DRAWING CONTAINS INFORMATION THAT IS PROPRIETARY TO VITECK CORP., LTD AND SHOULD NOT BE USED WITHOUT WRITTEN PERMISSION		THIRD ANGLE PROJECTION DVG REV. 7 SHEET NO. 1 OF 2 SIZE
QUALITY SYMBOLS ▽=0			

7 6 5 4 3 2 1

HALOGEN FREE



Recommended Mould Finger Layout
Default Tolerance ±0.05



Recommended PCB Layout(Top View)
Default Tolerance ±0.05

GENERAL TOLERANCES (OTHERWISE SPECIFIED)		SCALE 1 : 1	DESIGN UNITS MILIMETER	
4 PLS	±	DRAWN BY KELLY	DATE 2018-10-15	
3 PLS	±	CHECKED BY	DATE	PART NO. M2N-006 SERIES
2 PLS	± 0.20	APPROVED BY	DATE	
1 PLS	± 0.25			SHEET NO. 2 OF 2
ANGLES	± °	DRAWING NO. SD-M2N006-005		
QUALITY SYMBOLS	$\nabla=0$	THIS DRAWING CONTAINS INFORMATION THAT IS PROPRIETARY TO VITECK CORP., LTD AND SHOULD NOT BE USED WITHOUT WRITTEN PERMISSION		SIZE

7

6

5

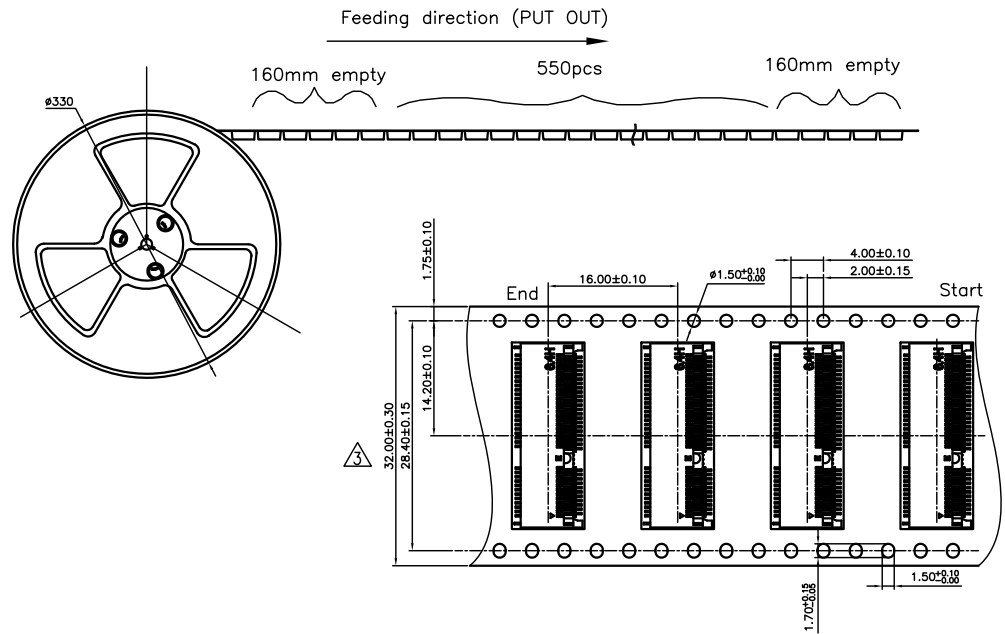
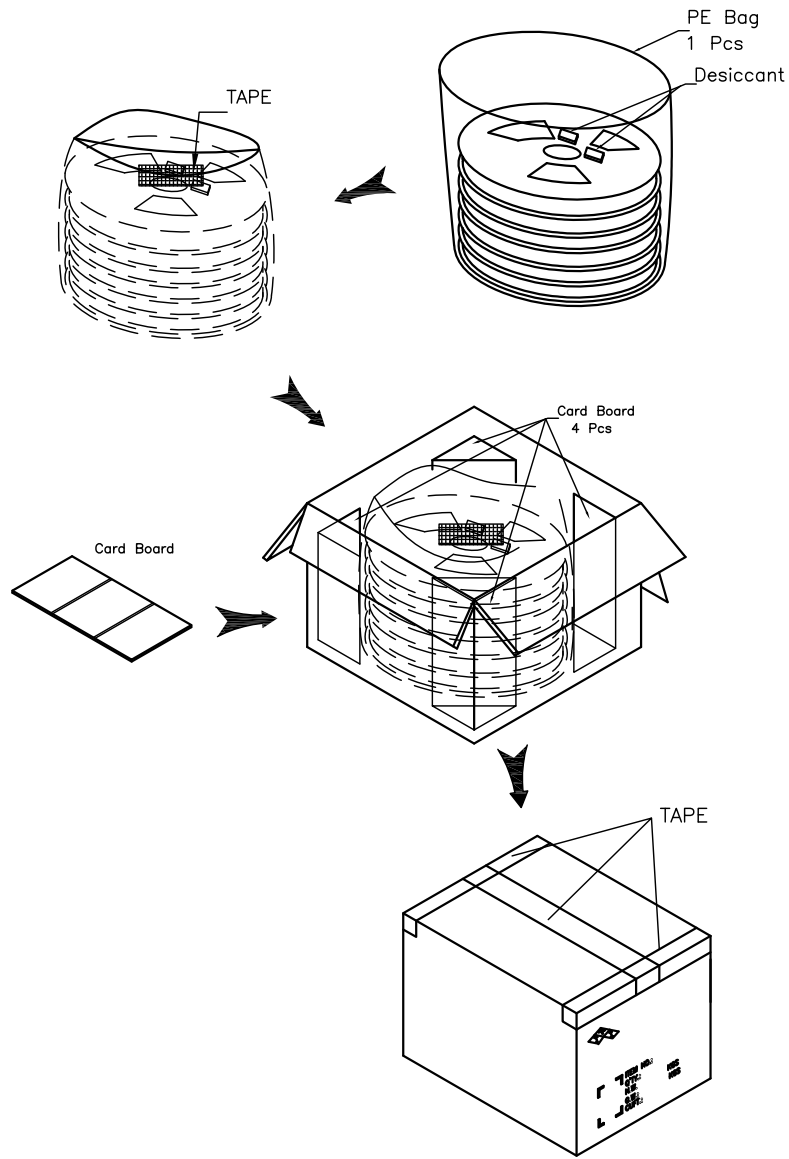
4

3

2

1

REVISIONS			
REV	DESCRIPTION	DWN	DATE
3	PROPOSAL	EDEN	2015-05-07



PRODUCT P/N	PARTS PER SHIPPING CARTON	PARTS PER REEL (S.P.Q.)	TOTAL REELS PER SHIPPING CARTON
M2N-006 SERIES	5500(PCS) Δ	550(PCS)	10 Δ

GENERAL TOLERANCES (OTHERWISE SPECIFIED)	SCALE 1 : 1	DESIGN UNITS MILIMETER	
4 PLS ± mm	DRAWN BY EDEN	DATE 2015-05-07	
3 PLS ±	CHECKED BY	DATE	TITLE NGFF SOCKET (M.2 CONNECTOR) C/H OFFSET 5.32mm STD TYPE, SMT, H=6.4 KEY E
2 PLS ± 0.20	APPROVED BY	DATE	PART NO. M2N-006 SERIES
1 PLS ± 0.25	DRAWING NO. PK-M2N006-005		
ANGLES ± °	THIS DRAWING CONTAINS INFORMATION THAT IS PROPRIETARY TO VITECK CORP, LTD AND SHOULD NOT BE USED WITHOUT WRITTEN PERMISSION		THIRD ANGLE PROJECTION
QUALITY SYMBOLS ∇ = 0			DWG REV. 3
		SHEET NO. 1 OF 1	
		SIZE	

7

6

5

4

3

2

1